

Functional Pathway



Welcome

The functional pathway prepares pupils for life beyond school. We aim to provide pupils with the skills they need to live as independently as possible in later life. The confidence to develop the skills they've learnt to the next level, and the knowledge and understanding of the world around them to expand their horizons and plant seeds of ambition to make a future of their own.

What we offer...

- Entry level English, Maths and ICT qualifications
- ASDAN Personal Social Development and Personal Progress accreditations
- Duke of Edinburgh award
- Vocational options
- Travel training

Alongside the above our curriculum continues to support in daily phonics/ spelling support, reading and writing interventions, pre-entry level functional maths and English, science, computing, RE, PE (including water safety) and a wide range of personal development opportunities through PSHE, life skills and throughout the curriculum. Support for pupil wellbeing is supported through circle discussions, MHWB sessions, RSHE / PSHE and assemblies.

To make the above possible we require parents/ carers support. All pupils in the pathway should have a bus pass so they can access travel training. This is free for all our pupils but will need to be applied for by parents / carers.

We also access a range of trips throughout the year which will require a small amount of money. It is important that we are teaching the pupils how to spend, save and look after their money. Pupils are likely to transfer to PIP payments when they turn 16. The DWP come into school and discuss the money they get and how this can support them either through employment or their day to day support.

As parents/carers you are a vital link in the ongoing development of your child. It is important that parents continue to attend coffee mornings, information meetings, EHCP reviews and are active in the discussion around post 16 provision. All year 9 and year 11 EHCP meetings will be in person so that we can all agree and be working on the discussed targets together.

Many of our pupils begin to use electronic devices when they get to year 8/9 and we know this can be a great distraction from the world but also an issue for friendships and potentially harmful. We have weekly discussions around e-safety but many of these principles of using technology safely happen when they are at home. If you would like any advice or support on safeguarding your child's technology use then please let us know.



Life beyond Kemball

It's important that when your child is in the Functional Pathway you are starting to think about provision after Kemball School. The Local Authority require decisions on post-16 provision to be made before December of Year 11. As a school we ensure that the EHCP review process is complete by October of year 11 which is when we name the college / provision of choice. There are circumstances where provision choices have changed later in the year. It is important to consider that places at most local provisions are limited and it is important to be prepared and know where you want your child to go. Some colleges will only accept admission if a parent/carer has been to visit to ensure that it is an informed choice.

Below is a selection of post-16 provision available in our local area however there are places available beyond our LA.

In some cases mainstream provision may be able to meet the needs of your child. It is important to discuss this in school and ensure the sufficient visits and transitions have taken place. Due to all our pupils having an EHCP they may stay in education for longer. Most pupils attend a specialist provision first and then move onto alternative Further Education.



Transport

Most colleges have a transport offer which is supported by the LA which is run in a similar way to school. When you are visiting the colleges you should ask about this as it is not always free and there may need to be a financial contribution.

Residential

For some pupils residential facilities may be something to discuss. This process will need to be supported by Social Care. www.createdbyparents.com/spotlight-on/residential-colleges

Work experience

Entering the world of work may feel like a scary place for your child to be. We aim to open doors and show our pupils as many different experiences and information of places of work. This is not your typical work experience where you spend time in any workplace regardless of interest or ability. We offer internal placements and volunteering opportunities and we reach out to the wider community to ask for invites into a range of different vocations. Our options on a Thursday are all vocational themed to develop a workplace role and understanding. If there are any parents who feel they could offer an invite into their world of work please get in touch with Emily (careers lead).

A major area of focus for the pathway is instilling pupils independence and ensuring they take on different roles and responsibilities. Some may choose to become Prefects which can be applied for in Year 10 and is a Year 11 responsibility. Pupils take on this role and have a range of jobs they are requested to support in.

Developing independence is preparing them for future life and we will often challenge pupils and even parents by setting challenges for self care and responsibilities. This may even come into their EHCP targets which should be worked on at home as well as in school.

Newfriars College

www.newfriars.org.uk

01782 987180

helpline@newfriarscollege.org.uk

Newfriars College

Castle Grove off Newhouse Road

Bucknall

Stoke-on-Trent

ST2 8BH

Abbey Hill

www.abbeyhillschool.co.uk

01782 882882

abbeyhill@abbeyhillschool.co.uk

Abbey Hill School & College

Box Lane, Meir,

Stoke-on-Trent ST3 5PP



Regent College

www.regentcollegestoke.co.uk

01782 263326

adminteam@regentcollege.org.uk

Regent College

77 Shelton New Road

Stoke-on-Trent

ST4 7AA

Strathmore College

www.aspriscs.co.uk/find-a-location/

strathmore-college-stoke-on-trent

01782 647380

StrathmoreCollege@AsprisCS.co.uk

Unit 7-Imex Centre Technology Park

Bellringer Road

Stoke-on Trent

Staffordshire

ST4 8LJ

Landau—charity

www.landau.co.uk

01782 324 398

info@landau.co.uk

Landau Training & Enterprise Centre Stoke

Waterside Drive,

Stoke-on-Trent

ST3 3NW

Newcastle College

www.nscg.ac.uk

01782 715111

info.newcastle@nscg.ac.uk

Knutton Lane, Staffordshire ST5 2GB

Stoke-on-Trent College

BURSLEM CAMPUS

Moorland Road Burslem

ST6 1JJ

CAULDON CAMPUS

Stoke Rd Shelton

ST4 2DG

01782 208208

Reaseheath College

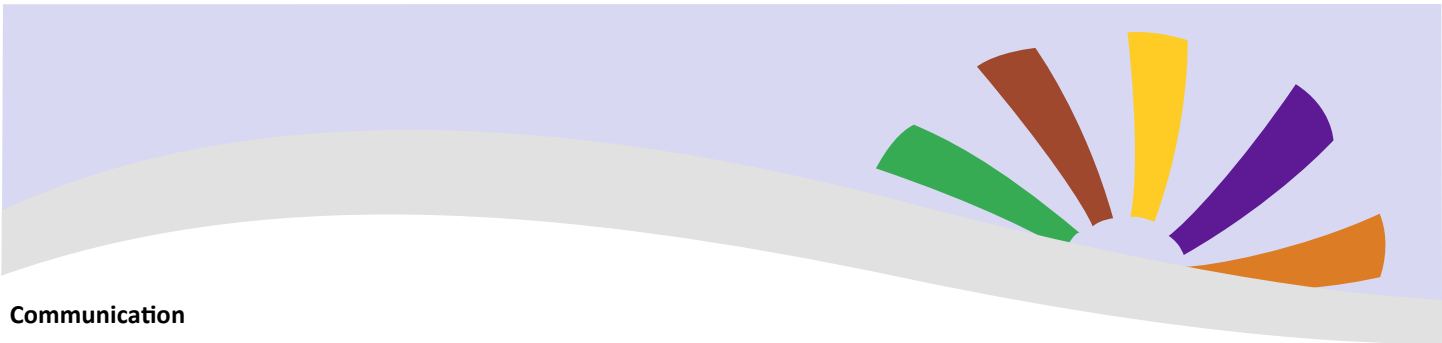
www.reaseheath.ac.uk 01270 625131

enquiries@reaseheath.ac.uk

Reaseheath College

Nantwich

Cheshire, CW5 6DF



Communication

Communication is really important so you are up to date with the latest news! Most of our day to day information will be on DOJO so please make sure you check this regularly. The latest dates for the pathway will be published via the whole school diary which is put onto DOJO monthly.

Contacts

Danielle Ward—Pathway lead

Regency 1—Ian Kelsall

Regency 2— Sam Grayley

Aynsley 1— Eleanor Matthews

Aynsley 2—Danielle Wall

Uniform



We understand at this age pupils often like to express themselves differently! We still expect the pupils to continue to wear uniform, however if they do not want to wear the red school jumper they can wear a plain black jumper (no design labels) or a Duke of Edinburgh jumper, the link to order is below. Please ask class staff for D of E registration number. PE kits should only be worn on the days they have PE. Non-uniform may be allowed on school trips however this is at the discretion of the class teacher.

<https://edofe.org/DofEEssentials/Index>

Travel training

Again please apply for your child's bus pass as soon as possible. The link is below. We will be supporting with this on the first coffee morning but please take a look online for the identity documents you will need to apply. Travel training is a crucial aspect of your child's independence for the future and when this is started earlier pupils are much more prepared for college as this is an expectation for most when going to college.

https://www.stoke.gov.uk/info/20008/roads_parking_and_travel/538/free_bus_pass

