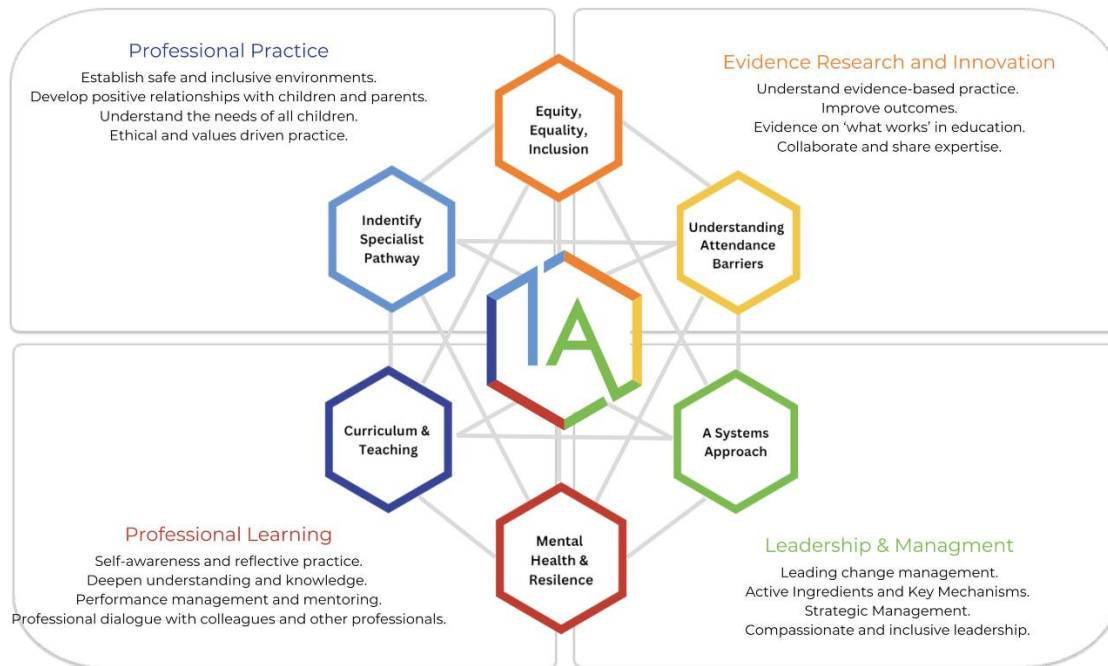


Kemball School is proudly recognised as an Inclusive Attendance school. Our unwavering commitment to attendance centres around child-centric actions, evidence-informed practices, and a shared understanding of everyone's roles and collective responsibilities to promote exceptional attendance.

Inclusive Attendance Professional Development Model

Our attendance approach follows the **Inclusive Attendance** professional development model, which has six tailored learning modules. These modules help all staff continually build their skills and understanding. The model focuses on four key areas—professional learning, professional development, evidence-based practices, and strong leadership—so we can put theory into practice effectively.

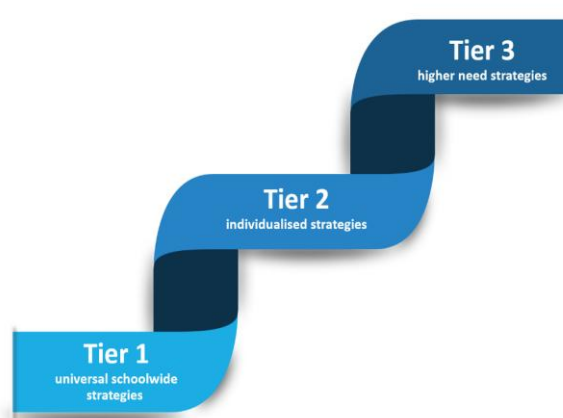


Annual Inclusive Attendance 7-Month Development Programme

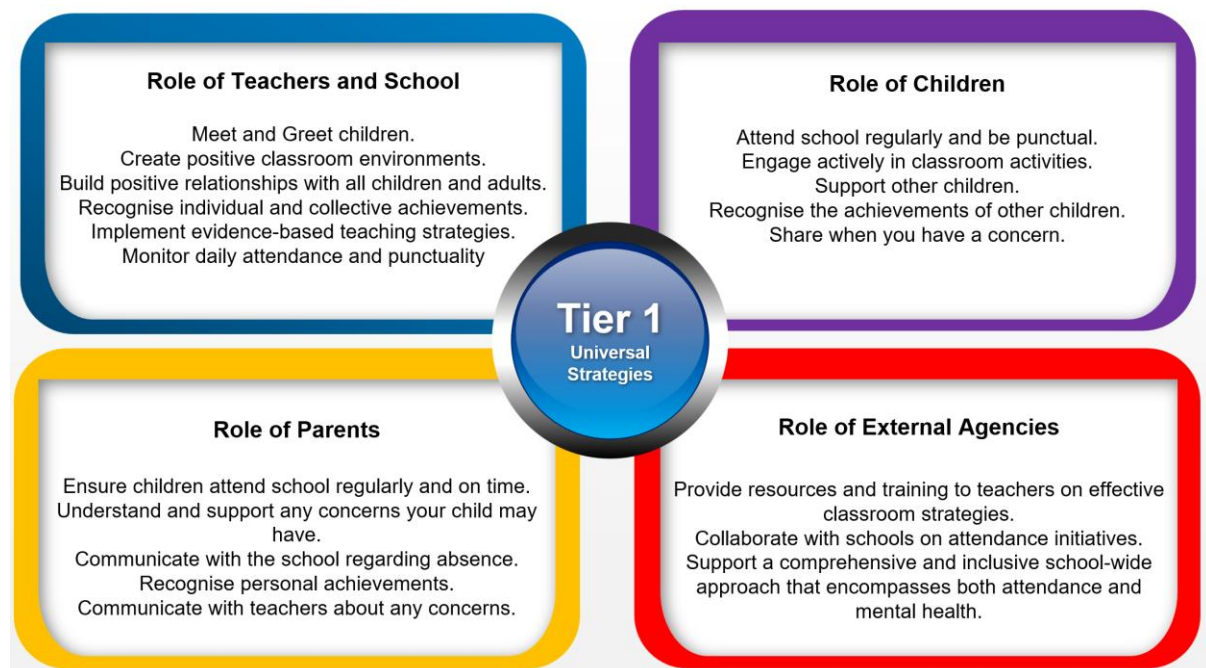
Each year, we improve our attendance practices by taking part in the 7-month **Inclusive Attendance** development programme. This keeps us up to date with educational changes and helps us give children and their families the best possible support..

Multi-Tiered System of Support

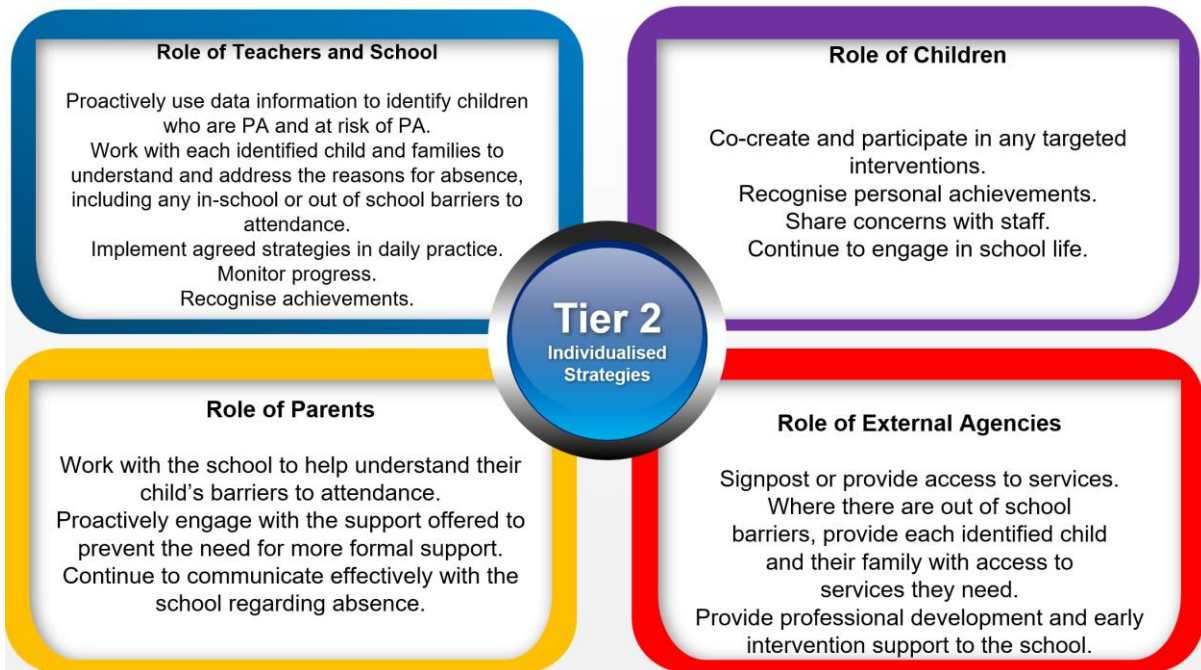
To support attendance in a thorough way, we use a **Multi-Tiered System of Support (MTSS)**. This approach has three levels of intervention, involving teachers, the school, pupils, parents, and external agencies such as the Local Authority. It relies on data to guide decisions and includes staff training. Our system follows the Department for Education's *Working Together to Improve School Attendance* guidelines.



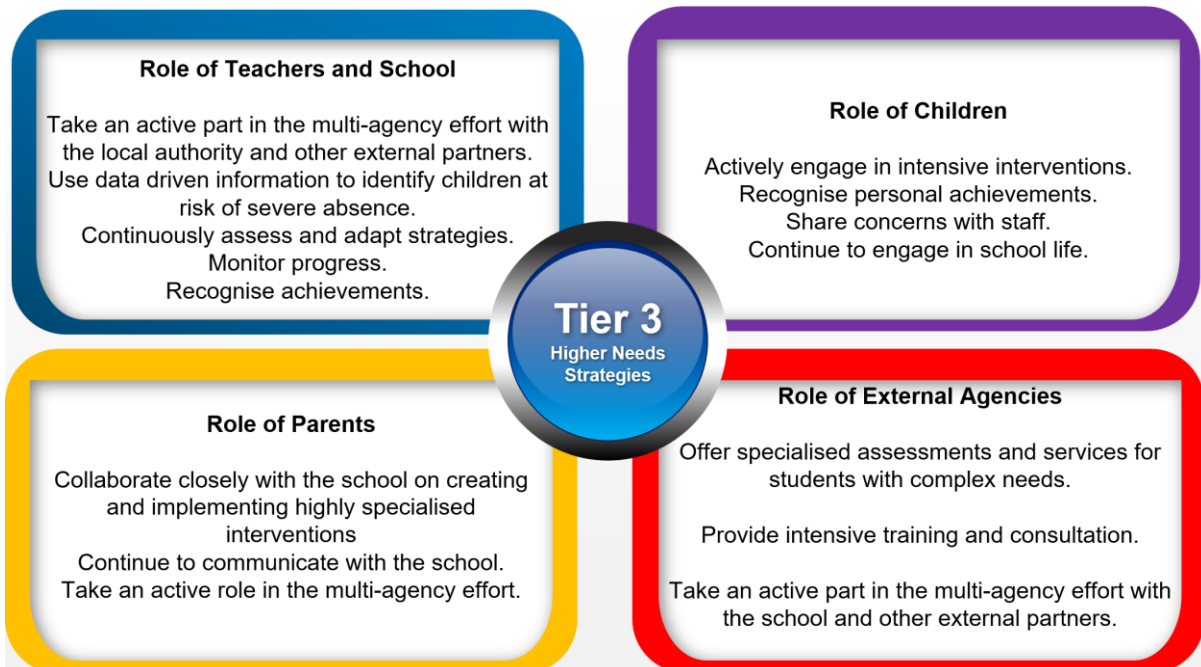
Tier 1 - Universal Approach: Establishing a baseline universal attendance approach that benefits all children.



Tier 2 - Individualised Strategies and Early Help Support: Tailoring strategies to individual needs and providing early help support for persistent attendance challenges.



Tier 3 - Higher Needs Strategies Support: Furnishing specialised support for children, young people, and families with complex attendance requirements, including access to external agency support when necessary.



Recognition-Based Approach

Our attendance philosophy is based on recognising both individual and group achievements. This helps build positive environments and relationships, promote inclusivity, and encourage children, families, and staff to develop their own motivation.

The Importance of School Attendance

School attendance is more than just a rule—it's a key part of education. It is essential for academic success, personal growth, and future opportunities

- **Achievement** – Regular attendance helps each child make the best possible progress in their learning and development.
- **Learning** – School provides essential opportunities to gain knowledge, skills, and experiences that support personal growth and future independence.
- **Social Skills** – Attending school helps children build friendships, practise communication, and develop important social and life skills.
- **Routine** – Coming to school regularly gives children a sense of structure and predictability, which supports wellbeing and independence.
- **Staff Support** – Regular attendance allows staff to give personalised support, adapt learning activities, and celebrate progress.
- **Parental Role** – Families play a key role in supporting regular attendance, helping children benefit from everything school offers.
- **Community Impact** – Good attendance strengthens our school community and supports the wellbeing of all its members.